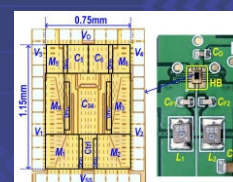
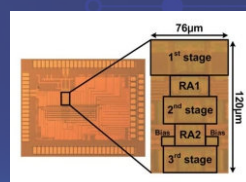
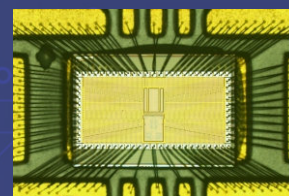
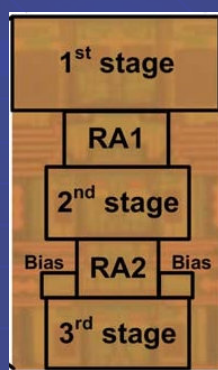
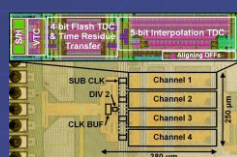
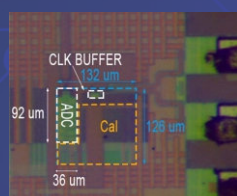
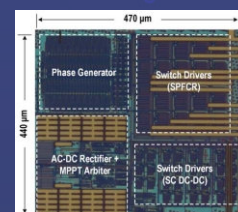
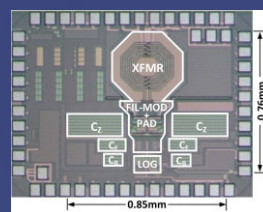
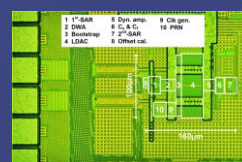
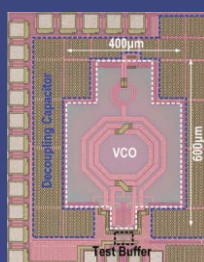
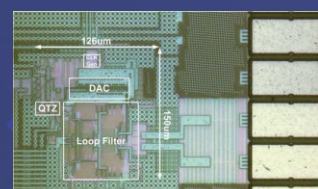
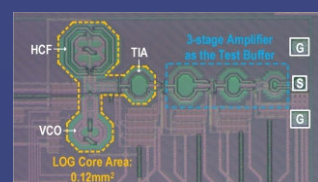
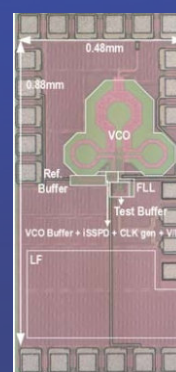
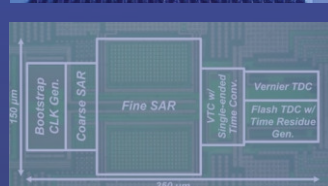
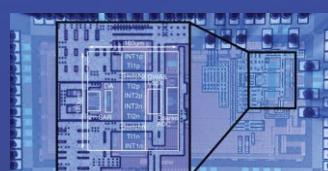
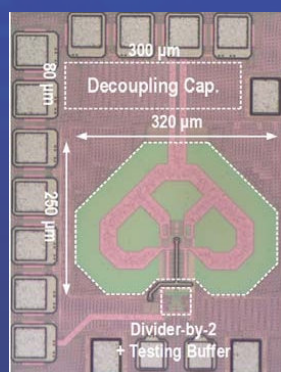
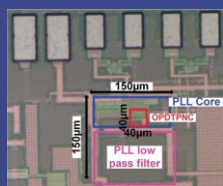
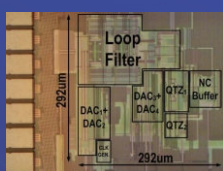


Research Report 2017-2020

State Key Laboratory of Analog and Mixed-Signal VLSI
University of Macau



CONTENTS

ACKNOWLEDGEMENTS

FOREWORD

ORGANIZATIONAL CHART

ACADEMIC COMMITTEE

RESEARCH ABSTRACTS

Wireless Transceivers	07
Wireline Integrated Circuits	24
High Resolution ADCs	33
High Speed ADCs	40
Sub-GHz to GHz ADCs	46
Analog and Mixed-Signal Circuits	53
Biomedical Electronic Devices	58
Energy Harvesting and Sensing Circuits	72
Lab-on-a-Chip	79
Power Management and Conditioning Circuits	87

LIST OF PATENTS

SPIN-OFF COMPANY

OUR TEAM

FACULTY PROFILES

RESEARCH INNOVATION CENTERS

THESES AWARDED

PROJECTS

EXPERIMENTAL PROTOTYPES

TESTING EQUIPMENT AND FACILITIES

01

03

04

05

07

105

107

108

109

128

132

135

137

147



澳門大學
UNIVERSIDADE DE MACAU
UNIVERSITY OF MACAU



模擬與混合信號超大規模集成電路
國家重點實驗室
Laboratório de Referência do Estado em
Circuitos Integrados em Muito Larga Escala
Analogicos e Mistos
State Key Laboratory of
Analog and Mixed-Signal VLSI



微電子研究院
Instituto de Microelectrónica
Institute of Microelectronics