

TESTING EQUIPMENT AND FACILITIES



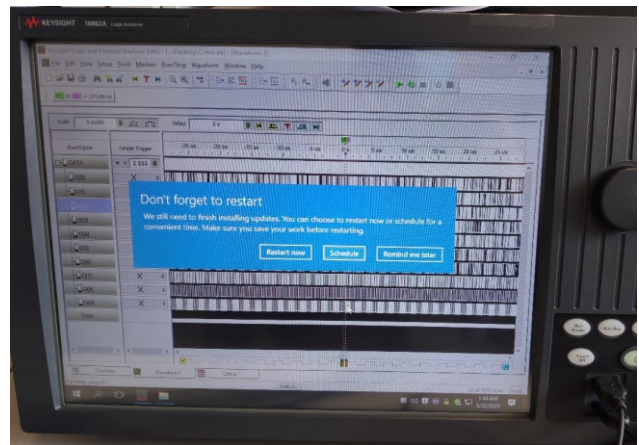
Model: Keysight MS0604A Mixed Signal Oscilloscope 6 Ghz



Model: Keysight DSAV334A Digital Signal Analyzer 33 Ghz



Model: Keysight PSG Analog Signal Generator E8257D 250kHz-20GHz



Model: Keysight 16862A Logic Analyzer

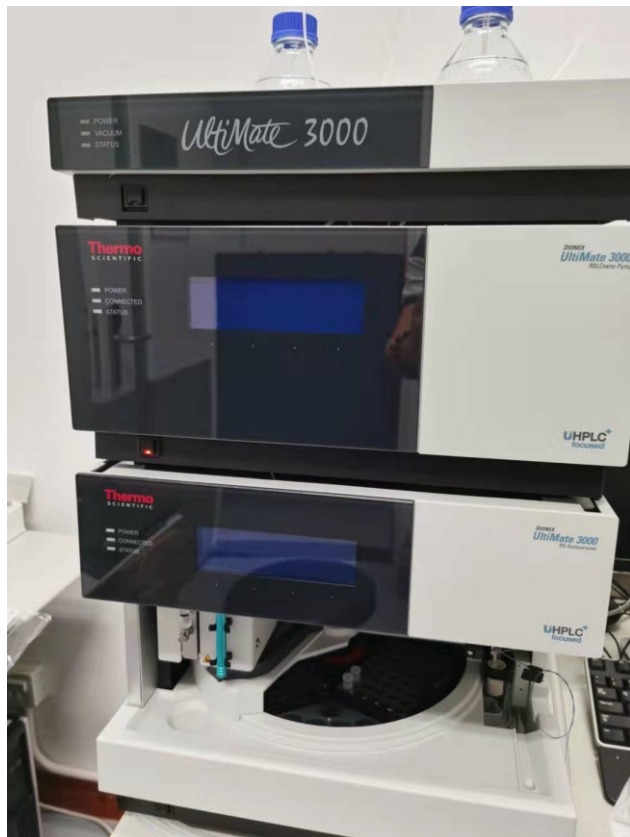


Model: U4164A Logic Analyzer

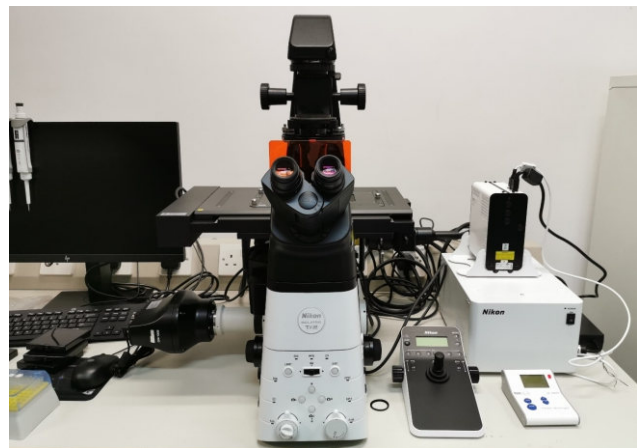


Model: Bruker Optical Profiler, GTK-M

TESTING EQUIPMENT AND FACILITIES



Model: Thermo Scientific Dionex Ultimate 3000



Model: Nikon Motorized Inverted Microscope Ti2



Model: O2 Plasma Cleaner



Model: Mini DC Sputter System

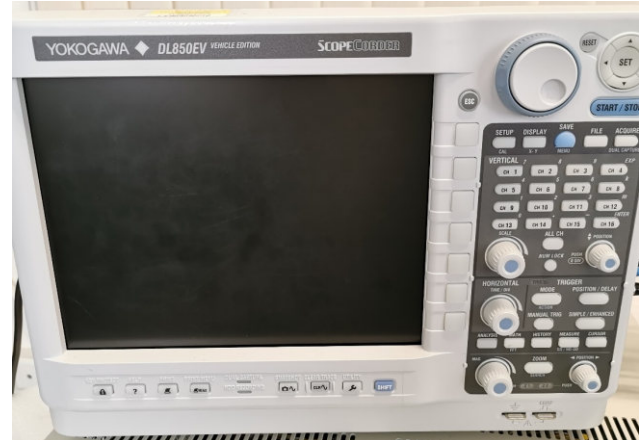


Model: Apogee Hotplate System

TESTING EQUIPMENT AND FACILITIES



Model: California Instruments 3091LD
Programmable Power



Model: YOKOGAWA DL850EV ScopeCorder



Model: Rack Server ProLiant DL380 Gen10



Model: Keysight U4164A Logic Analyzer



Model: Keysight MSOV204A Mixed Signal
Oscilloscope 20 Ghz



Model: Keysight Signal Source Analyzer
E5052B 10 MHz – 7 Ghz



Model: Keysight MSOS804A Digital Storage
Oscilloscope 8 Ghz

TESTING EQUIPMENT AND FACILITIES



Model: Keysight MSOS404A Mixed Signal Oscilloscope 4 Ghz



Model: Keysight N6705C DC Power Analyzer



Model: K&L 4 MHz to 750 MHz Programmable Filter Module



Model: K&L 15 MHz to 4GHz Programmable Filter Module



Model: QuantStudio™ 5 Real-Time PCR System



Model: SeqStudio™ Genetic Analyzer System

TESTING EQUIPMENT AND FACILITIES



Model: Tresky T-3000-Pro Die Bonder & Component Placer



Model: Fujifilm Dimatix Materials Printer DMP-2850



Model: Profilm 3D Optical Profiler

TESTING EQUIPMENT AND FACILITIES

CAD Design Class Laboratory



TESTING EQUIPMENT AND FACILITIES

Chip Fabrication and Measurement Laboratory



TESTING EQUIPMENT AND FACILITIES

PCR and Equipment Room



TESTING EQUIPMENT AND FACILITIES

Server Room



CORE SWITCH

H3C 10508 x 2: Switching capacity 106.2Tbps

STORAGE CAPACITY

EMC Isilon S210: 3 nodes, 39TB raw and 60Gbps parallel data connections
EMC Isilon X210: 4 nodes, 176TB raw and 80Gbps parallel data connections
EMC Isilon F800: 4 nodes, 96TB raw and 320Gbps parallel data connections
EMC Isilon H500: 4 nodes, 240TB raw and 320Gbps parallel data connections
EMC Isilon A200: 4 nodes, 480TB raw and 80Gbps parallel data connections

CLOUD COMPUTING SERVERS

Over 100 Servers and 300 PC clients, 2376 CPU cores and 11TB RAM in total.
Can run 256 multi-core microelectronics simulations simultaneously.

SOFTWARE AND EDA TOOLS

- Cadence: Custom Integrated Circuits Bundle (140 licenses), Digital Integrated Circuits Bundle (20 licenses)
- Mentor Graphics: Nanometer design bundle (30 licenses)
- Synopsys: Front-end University Bundle (7 licenses)
- Sonnet Professional with Floating Network License with High-Performance Solver Engine
- Matlab and Simulink
- OpenText OpenText Exceed TurboX